

AMPLIFY / LISTEN

Speak

GIVE VOICE TO DESIGN VISION

MaslandTM
c o n t r a c t

MaslandTM

c o n t r a c t

Style is a statement, the expression of a design vision. Now, give full expression to your vision with Speak, a collection of exceptional modular carpet options from Masland Contract. Progressive design with outstanding quality will complete any project that Speaks to you.

How do you Speak? It's easy:

It's all about freedom of expression with Amplify and Listen. Each pattern can be configured in a multitude of ways to produce movement in the floorscape. The color-play in each tile builds energy into commercial designs, making Amplify and Listen well-spoken candidates for contemporary business interiors.

With Amplify and Listen modular tiles, you are free to create movement in the visual field, using different combinations to articulate your design vision.



AMPLIFY

Intensify commercial contract design with the subtle movement of Amplify. Constructed of EarthSmart™ *refreshfiber*® solution-dyed Type 6,6 nylon, Amplify provides the foundation for today's contemporary compositions.



“ A live concert to me is exciting because of all the electricity that is generated in the crowd and on stage. It’s my favorite part of the business. ”

- Elvis Presley



SPEAKING OF COLOR



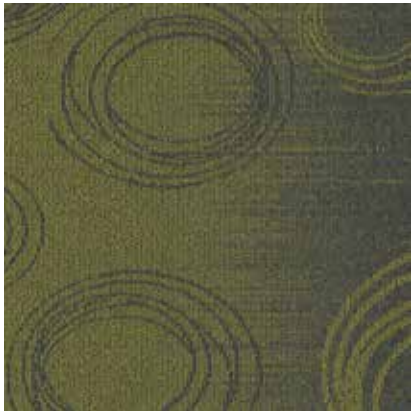
51000 CIRCULATE



51001 HYPE



51002 IMPLY



51003 REVEAL



51004 SOFTLY



51005 PARLAY



51006 WHISPER



CONSTRUCTION SPECIFICATIONS

Product	Amplify
Style Number	T510
Fiber Content	EarthSmart™ <i>refreshfiber</i> ® Type 6,6 nylon
Fiber Recycled Content	30%*
Gauge	1/12
Construction	Pattern Loop
Carpet Tile Size	24" W x 24" L (60.96 cm x 60.96 cm)
Dye Method	Solution Dyed
Total Thickness	.250" (6.35mm)
Secondary Backing	Vinyl (contains recycled content*)
GLP Certification	GLP1922

PERFORMANCE SPECIFICATIONS

Warranty	Lifetime Commercial Limited Warranty
Flammability Rating	Flooring Radiant Panel ASTM E-648 and/or NFPA 253 Greater than 0.45 watts/CM ² Class 1 (EU) BFL S 1 Surface Flammability of Carpets and Rugs (16 CFR Chapter II Subchapter D, Part 1630 CPSC FF 1-70) also referenced as ASTM D-2859
Smoke Density	Passes NBS Smoke Chamber Test ASTM E-662 (flaming mode)
Colorfastness to Light	4.0 or better
Static Rating	Less than 3.5 kV. Antistat warranted for the life of the carpet

*For detailed percentage of recycled content, contact your Masland Contract representative.

Specifications may vary slightly over the life of a product. For current specifications, please visit www.maslandcontract.com.

Amplify is 3rd party certified PLATINUM by the NSF/ANSI 140 Sustainable Carpet Standard.

The positioning of pattern elements within a tile is random. Within a product, each tile will exhibit a unique placement of the pattern elements comprising that product.

Slight variations between sample swatches and production goods are to be expected and are considered normal. Likewise, such variations will occur between production goods of different dye lots. Masland laboratory matches are obtained under cool white fluorescent lighting. Chair pads are recommended to enhance the aesthetic value and longevity of the product.

Help Us Recycle

Masland Contract's goal is to eliminate all product waste going into landfills. Help us by removing samples from folders and recycling folders through your standard paper recycling process. Forward samples to Masland by using prepaid address labels available through your Masland Contract representative.

All Masland designs are protected under the U.S. Copyright Act of 1976. Any unauthorized duplication or approximation of a Masland design constitutes copyright infringement in violation of Federal Law.





LISTEN

Gather energy from the quiet, confident style of Listen. With its EarthSmart™ refreshfiber® solution-dyed Type 6,6 nylon construction, Listen provides a powerful backdrop for commercial interior designs.



“ The music is not in the notes,
but in the silence between. ”
- Wolfgang Amadeus Mozart

SPEAKING OF COLOR



51100 CIRCULATE



51101 HYPE



51102 IMPLY



51103 REVEAL



51104 SOFTLY



51105 PARLAY



51106 WHISPER



CONSTRUCTION SPECIFICATIONS

Product	Listen
Style Number	T511
Fiber Content	EarthSmart™ <i>refreshfiber</i> ® Type 6,6 nylon
Fiber Recycled Content	30%*
Gauge	1/12
Construction	Pattern Loop
Carpet Tile Size	24" W x 24" L (60.96 cm x 60.96 cm)
Dye Method	Solution Dyed
Total Thickness	.250" (6.35 mm)
Secondary Backing	Vinyl (contains recycled content*)
GLP Certification	GLP1922

PERFORMANCE SPECIFICATIONS

Warranty	Lifetime Commercial Limited Warranty
Flammability Rating	Flooring Radiant Panel ASTM E-648 and/or NFPA 253 Greater than 0.45 watts/CM ² Class 1 (EU) BFL S 1 Surface Flammability of Carpets and Rugs (16 CFR Chapter II Subchapter D, Part 1630 CPSC FF 1-70) also referenced as ASTM D-2859
Smoke Density	Passes NBS Smoke Chamber Test ASTM E-662 (flaming mode)
Colorfastness to Light	4.0 or better
Static Rating	Less than 3.5 kV. Antistat warranted for the life of the carpet

*For detailed percentage of recycled content, contact your Masland Contract representative.

Specifications may vary slightly over the life of a product. For current specifications, please visit www.maslandcontract.com.

Listen is 3rd party certified PLATINUM by the NSF/ANSI 140 Sustainable Carpet Standard.

The positioning of pattern elements within a tile is random. Within a product, each tile will exhibit a unique placement of the pattern elements comprising that product.

Slight variations between sample swatches and production goods are to be expected and are considered normal. Likewise, such variations will occur between production goods of different dye lots. Masland laboratory matches are obtained under cool white fluorescent lighting. Chair pads are recommended to enhance the aesthetic value and longevity of the product.

Help Us Recycle

Masland Contract's goal is to eliminate all product waste going into landfills. Help us by removing samples from folders and recycling folders through your standard paper recycling process. Forward samples to Masland by using prepaid address labels available through your Masland Contract representative.

All Masland designs are protected under the U.S. Copyright Act of 1976. Any unauthorized duplication or approximation of a Masland design constitutes copyright infringement in violation of Federal Law.



Masland[™]
c o n t r a c t

716 Bill Myles Dr.
Saraland, AL 36571
maslandcontract.com